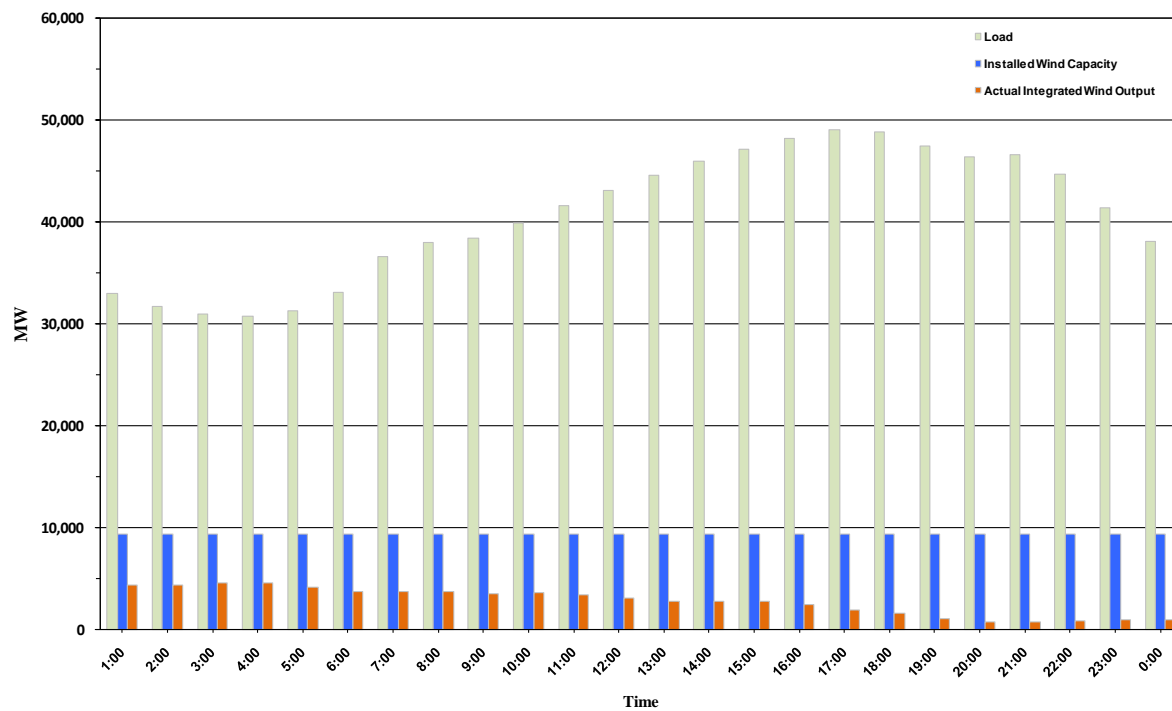




ERCOT Grid Operations Wind Penetration Report: 09/08/10

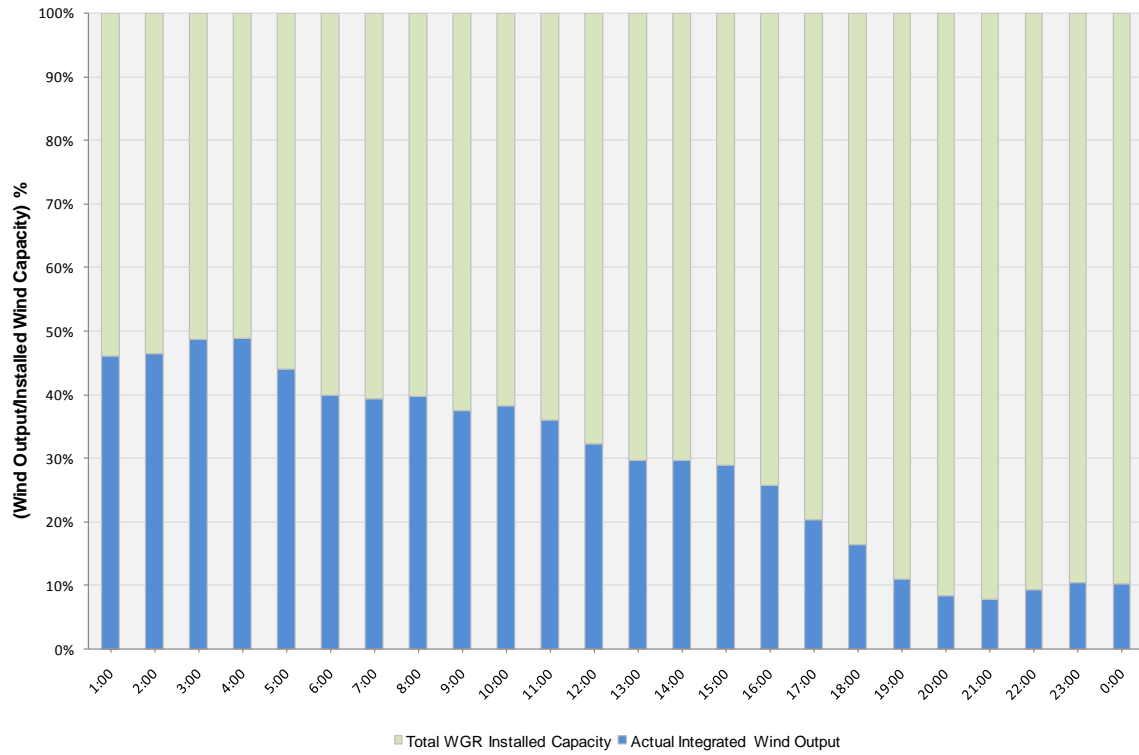
Peak Load	49,044 MW
Load Peak Hour	17
Wind Record 06/12/10	7016 MW
Max Wind value	4877 MW
Wind Peak Hour	00:00:20
Wind Penetration %	14.42

Hourly Average Actual Load vs. Actual Wind Output
09-08-2010

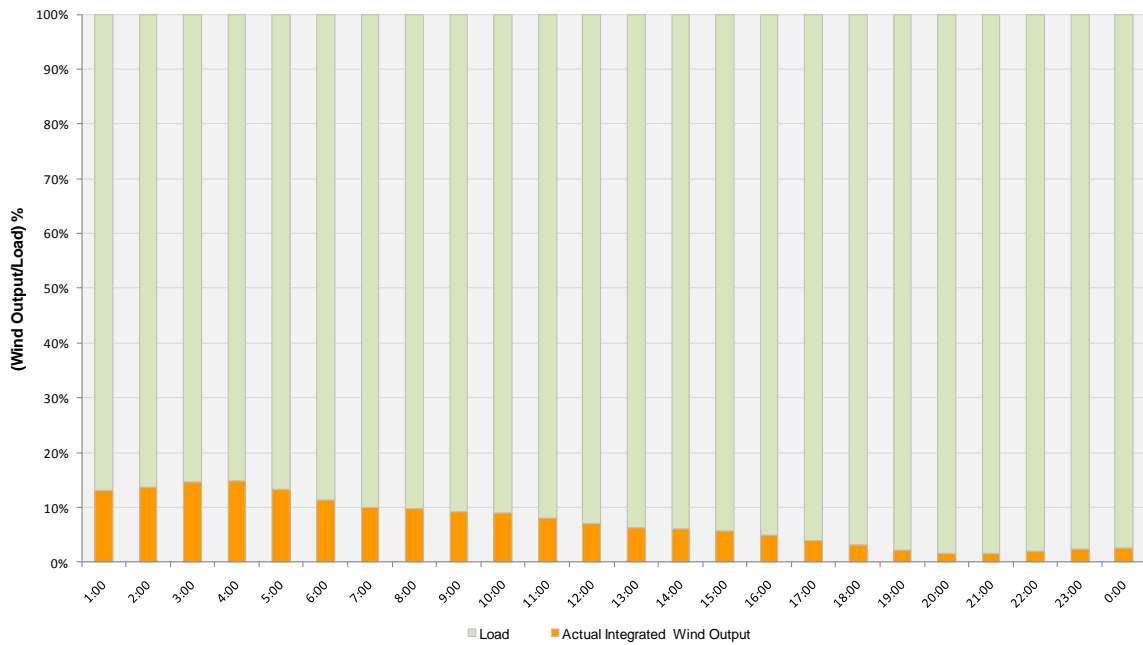




Actual Wind Output as a Percentage of the Total Installed Wind Capacity
09-08-2010



Actual Wind Output as a Percentage of the ERCOT Load
09-08-2010





ERCOT Load vs. Actual Wind Output 09/01/10 - 09/08/10

